



RADIAL BEARINGS

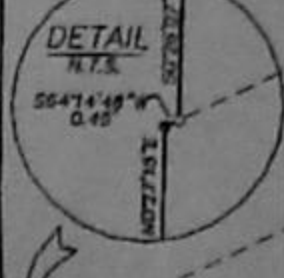
1	N47°12'48"W	17	N27°40'17"E
2	S42°18'37"E	18	N7°38'31"E
3	S58°31'37"W	19	S23°01'17"E
4	S54°42'44"W	20	N87°07'47"E
5	S75°02'36"W	21	N88°04'07"W
6	S83°53'34"W	22	S24°00'13"W
7	N87°41'09"W	23	S24°00'13"W
8	S81°36'50"E	24	S34°48'21"W
9	S89°45'22"E	25	S34°45'15"E
10	S33°01'17"E	26	N87°07'47"E
11	N87°07'47"E	27	N88°04'07"W
12	S33°42'45"W	28	S35°28'43"W
13	N88°04'14"W	29	S21°11'27"W
14	N38°24'41"E	30	S24°03'53"W
15	N8°44'27"E		

CURVE TABLE

NUMBER	DELTA	LENGTH	RADIUS
C1	4°52'49"	16.61	195.00
C2	80°48'26"	42.31	30.00
C3	74°24'21"	35.88	30.00
C4	85°25'47"	44.73	30.00
C5	11°18'54"	15.75	100.00
C6	11°18'54"	15.69	79.00
C7	75°41'11"	39.63	30.00
C8	112°44'55"	56.04	30.00
C9	56°37'59"	25.65	30.00
C10	56°37'59"	25.65	30.00
C11	89°41'52"	43.30	30.00
C12	28°23'16"	49.55	100.00
C13	5°07'54"	7.57	84.00
C14	90°40'28"	47.45	30.00
C15	89°19'32"	45.77	30.00
C16	28°56'05"	50.80	100.00
C17	90°00'01"	47.12	30.00
C18	90°00'00"	47.12	30.00
C19	90°00'00"	47.12	30.00
C20	90°00'00"	47.12	30.00
C21	90°00'00"	47.12	30.00
C22	90°00'00"	47.12	30.00
C23	90°00'00"	47.12	30.00
C24	90°00'00"	47.12	30.00
C25	90°00'00"	47.12	30.00
C26	90°00'00"	47.12	30.00
C27	90°00'00"	47.12	30.00
C28	90°00'00"	47.12	30.00
C29	90°00'00"	47.12	30.00
C30	90°00'00"	47.12	30.00

FULL PLAT OF SHELLEY LAKE 4TH ADDITION

CITY OF SPOKANE VALLEY	DATE
10/21/2007	
REVISION	REVISION
24	25
25	44
DATE	PAGE
10/21/2007	1 OF 1



The west line of Accepted monuments measuring monuments

in Shelley Lake 4th Addition 118°46' E 1384.13 feet

in recorded Plats less noted otherwise.

reference to A. Main PLS 35156 & PLS 35156

Shelley Lake plat additions.

(city) not set.

Cap #10944 Accepted as Plot Corner

Accepted monument positions for Plot lines

Cap #10944 On Line 0.66 South

PROCEDURES

GPS System

least GPS observations

at Station

area

Cap #10944 Accepted as Plot Corner

Cap #10944 On Line 0.66 South

10' Utility Easement

10' Utility Easement

10' Utility Easement